

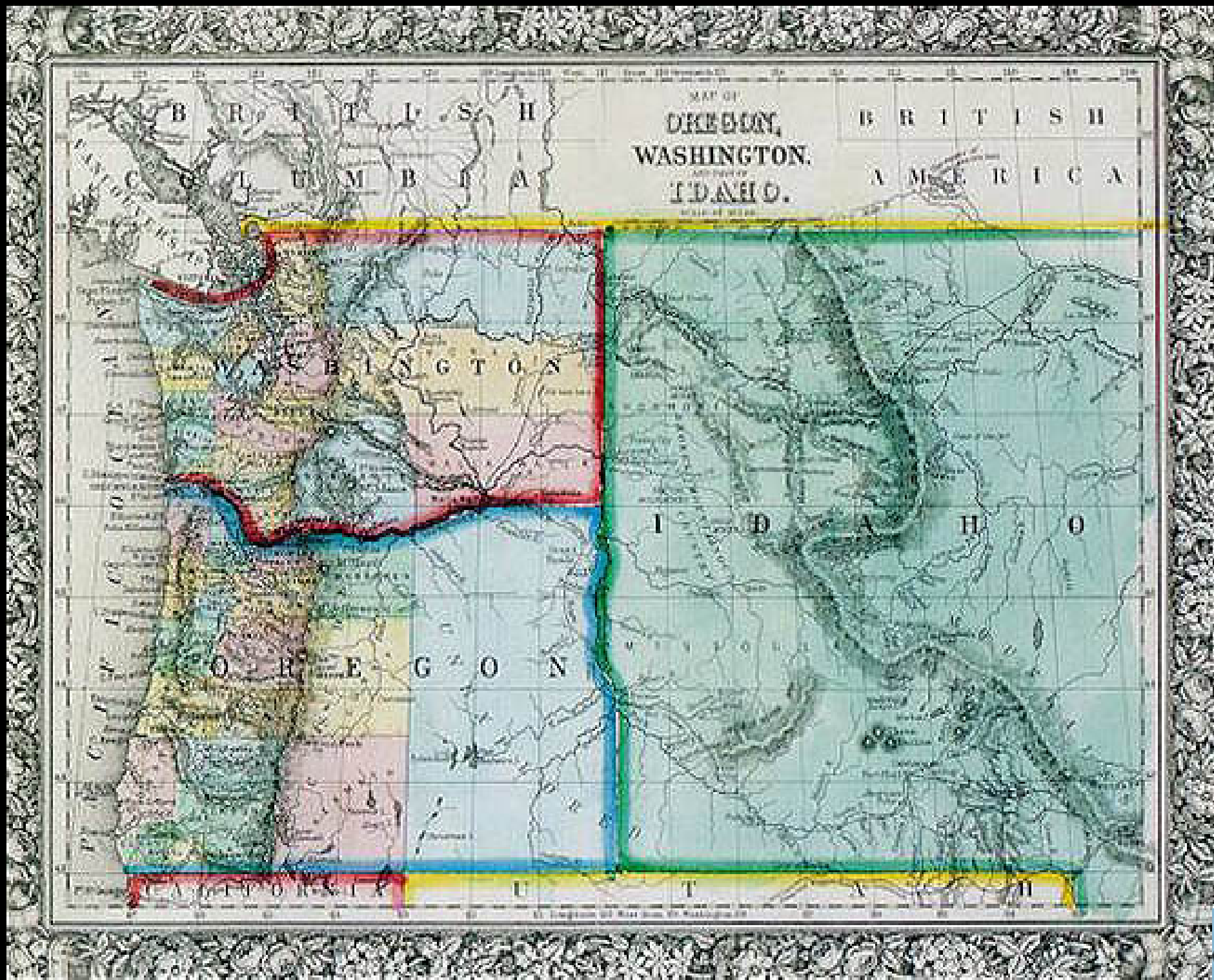
Idaho From The Air

Digital Geology of Idaho

NSF Geoscience
Education
Grant 03-31174

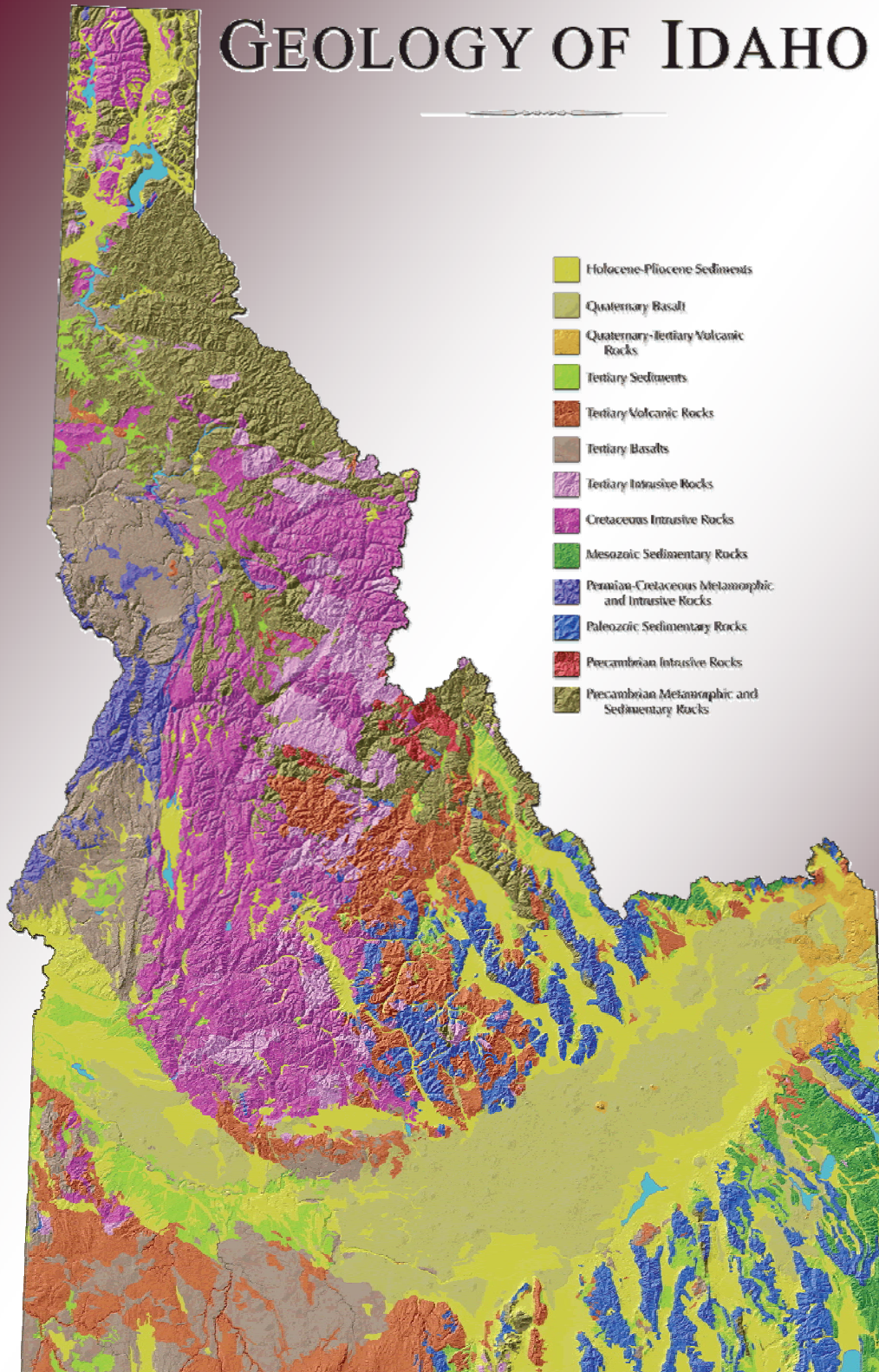
Idaho





A Map of greater Idaho in late 1863 or early 1864.
Courtesy: Special collections Division U. of W. Libraries, N979.5

GEOLOGY OF IDAHO



- Holocene-Pliocene Sediments
- Quaternary Basalt
- Quaternary-Tertiary Volcanic Rocks
- Tertiary Sediments
- Tertiary Volcanic Rocks
- Tertiary Basalts
- Tertiary Intrusive Rocks
- Cretaceous Intrusive Rocks
- Mesozoic Sedimentary Rocks
- Permian-Cretaceous Metamorphic and Intrusive Rocks
- Paleozoic Sedimentary Rocks
- Precambrian Intrusive Rocks
- Precambrian Metamorphic and Sedimentary Rocks

Idaho

Flight from Pocatello north to Lolo Pass, Lewiston, Moscow, Sandpoint, Dworshak Reservoir





Pocatello, view to south of Portneuf Narrows, path of the Portneuf Basalt flow and the Bonneville Flood, Portneuf Basalt.



Early morning fog lying low on American Falls Reservoir, view to north, sunrise, early October 2006.



Big Southern Butte, a composite rhyolite dome, view to north. INL smokestack in middle distance, Howe Hills, Lemhi and Beaverhead Ranges in far distance.



Arco Pass and south end of Lost River Range view to north. Big Lost River in foreground, in Box Canyon.



Arco, view to north, sunrise, folded Mississippian limestone behind town, Big Lost River in foreground.



Mackay Reservoir, with Upper Cedar Creek draining into it. View to northeast. Note that the creek is incised into older (Pleistocene) alluvial fans. Leatherman Peak is on far the left.



East side Bitterroot Mountains west of Hamilton Montana.



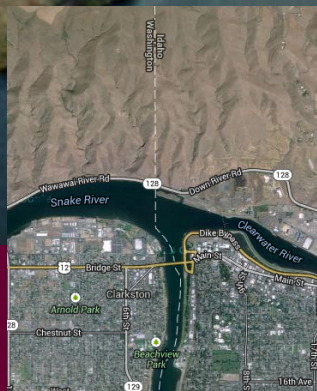
Clearwater River and switchback road to Weippe, Lolo Creek. Orofino in distance. Note prairies are underlain by Columbia River basalt.



Clearwater River

Snake River

Mouth of Clearwater River, Lewiston. View to the north.





*Couer
d'Alene
Mountains,
Shoshone
County,
Silver Valley*



Monocline in Columbia River Basalts, west of Lewiston



Palouse, view north to Moscow, Idaho.



University of Idaho, Moscow Idaho, view to north.



Logging, St. Joe Mountains, south of Kellogg.



North Fork Coeur d' Alene river. Placer mining.



Kellogg, Wardner gulch.



Silver Mountain Ski Hill.



View northeast at St. Maries. St. Joe River is draining toward the camera, from the east. St. Maries River is draining northwest from the right. Note meandering streams in sediment-choked valleys. This is the glacial outwash delta into Lake Coeur d'Alene.



Distal end of St Maries River delta into Lake Coeur d'Alene.



City of Coeur d'Alene and Resort, view to northwest.
I-90 Freeway cuts through center of view.



Spokane River, Rathdrum Prairie, view to north west of Post Falls.



Clark Fork River. Clark Fork Cabinet Gorge. Dam site for Lake Missoula.



Sandpoint, view to west.



Sandpoint. Sand Creek and spit.



North of Sandpoint. Glaciated Purcell Trench.



Bonnors Ferry, where Kootenai River comes out of Montana, flowing north into Canada and the Columbia. Cabinet Mountains on skyline.



Kootenai River flowing north into Canada. Border is in mid ground. Goes north into Columbia trench which was filled with ice of the Cordilleran ice sheet.



Selkirk Mountains, glaciated Cretaceous granite.



Priest Lake, Cavanaugh Bay, view to north.



Priest Lake, Soldier Creek, east side of lake.



Checkerboard logging north of Priest Lake.



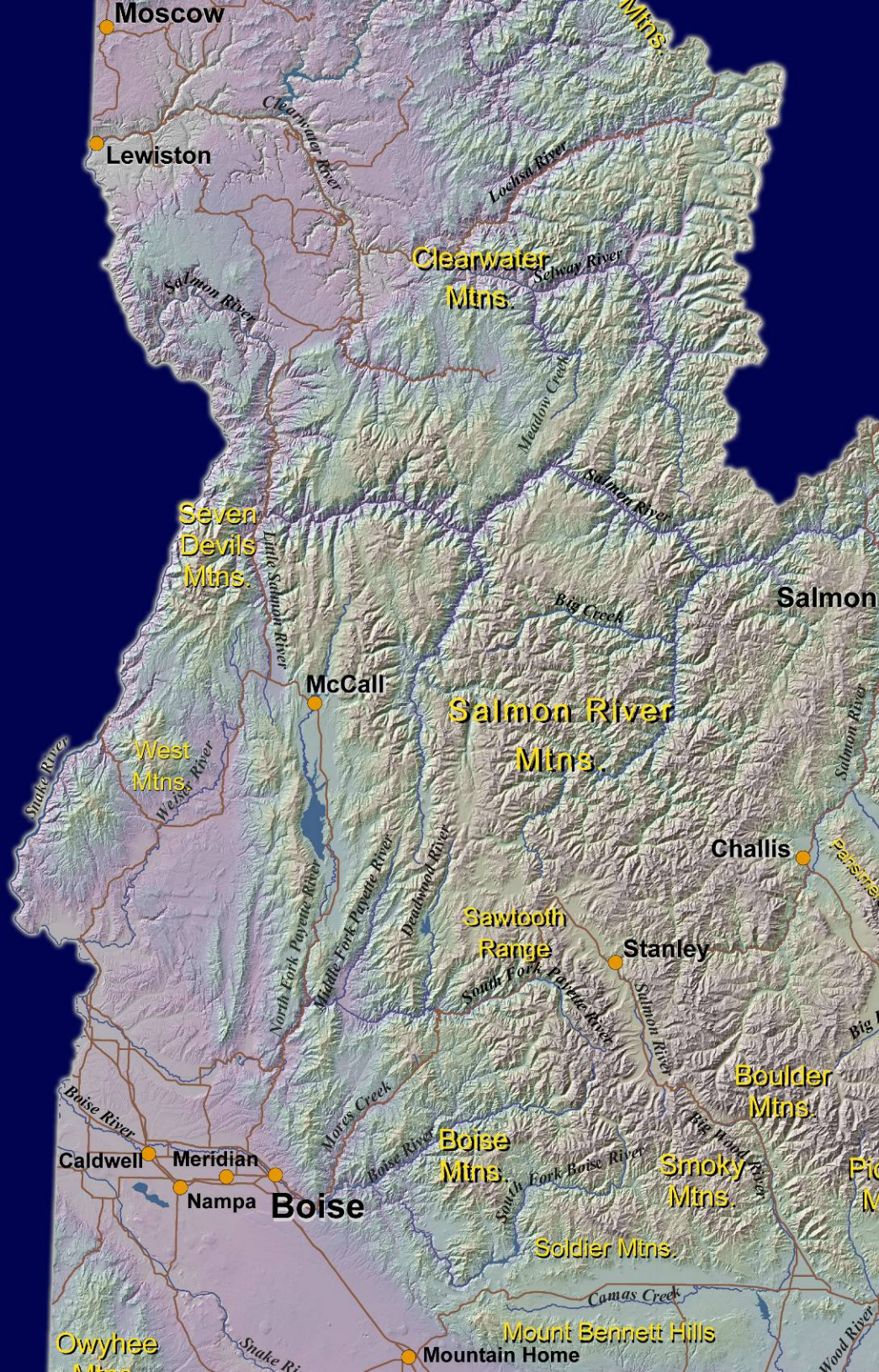
Old Man Bridge, Dworshak Reservoir.



Dworshak Dam and Clearwater River view to the west.



North of Grangeville, Camas Prairie, view to southwest.



Camas Prairie, Grangeville, Snake and Salmon River confluence



Camas Prairie Railroad Trestle.



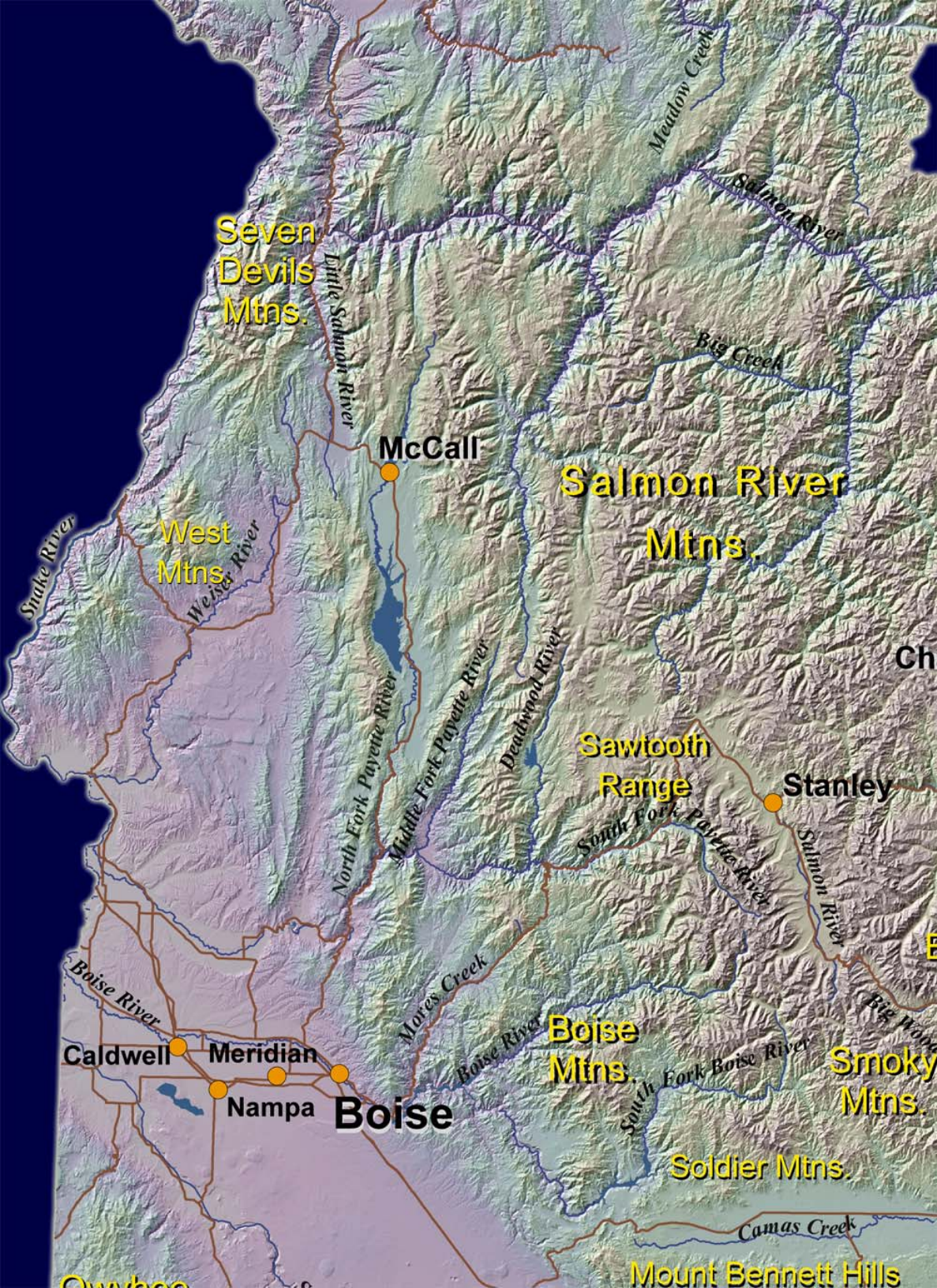
Columbia River basalts west of Riggins Cottonwood Creek on right?



Confluence, Snake and Salmon coming in from the east.



Twin Bridges, north of Slate Creek, view north to west dipping Columbia River Basalts, Oxbow in Salmon River.



*McCall and
Cascade area,
Tamarack Ski
area*

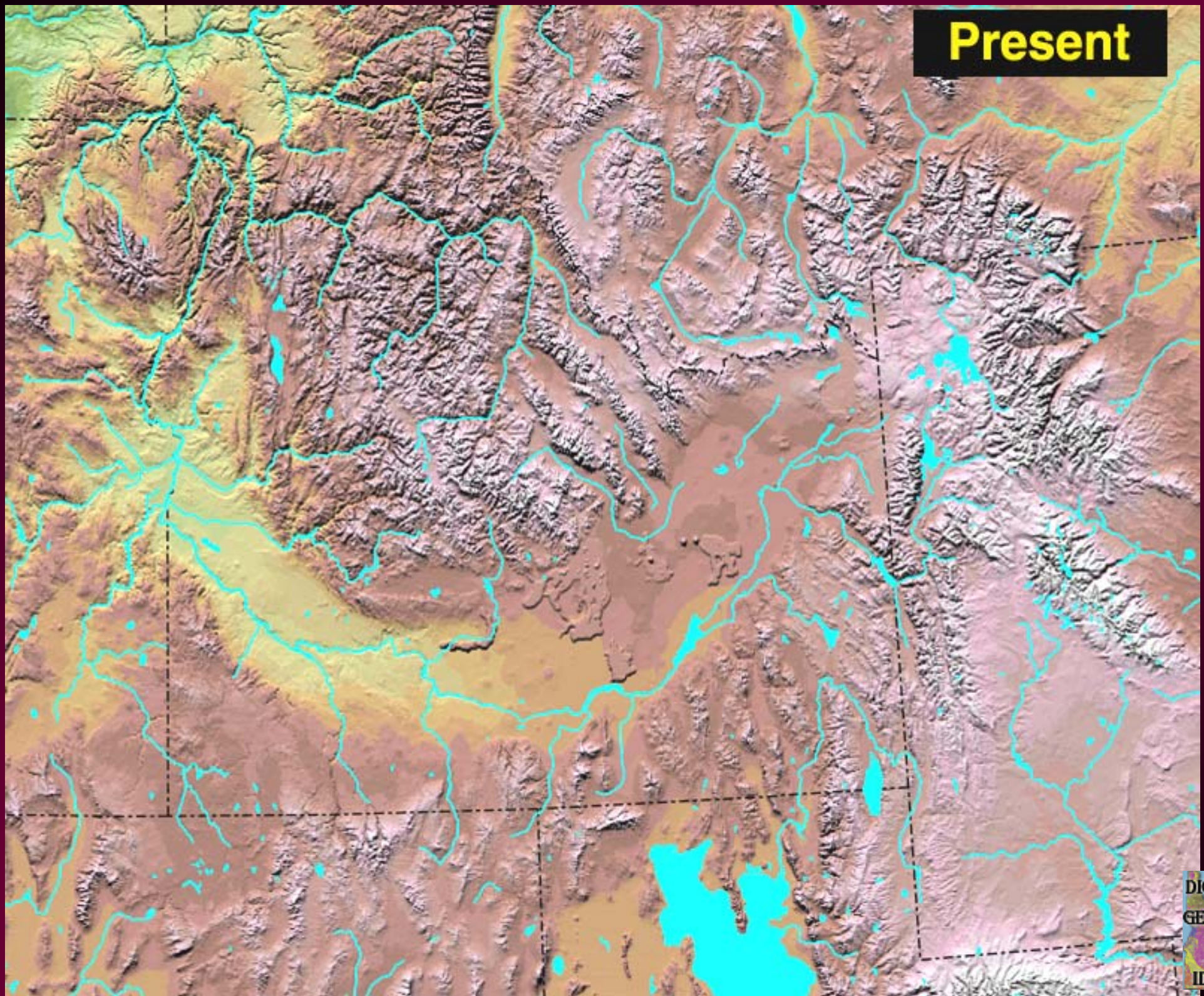


Payette Lake, view to northern headwaters.
Ponderosa Pine State Park on left.



Cascade Reservoir, note pre-reservoir roads!

Present



Pocatello west to the Owyhee Plateau





Incised delta and baymouth spit,
American Falls Reservoir. Mouth of Portneuf River



American Falls Dam.



Eagle Rock Dam to Lake American Falls and Massacre Rocks area view downstream in Snake River.



City of Rocks view to west.



Twin Sisters, California Trail, view to southwest.



Irrigated fields north of Oakley, Albion Range in far right distance.



Dairy operation north of Buhl



Snake River near Murtaugh, below Milner.



Snake River at Perrine Bridge, Twin Falls.



East of Glens Ferry, near Paradise Valley.



Bruneau Dunes State Park.



Bruneau River, basalts.



Jarbidge River, downstream from Murphy Hot Springs, Jacks Creek Rhyolite.



Near Fruitland, Payette Co. Snake River view to north, Weiser River on right.



Oxbow Dam, Hells Canyon



*Hells Canyon,
Seven Devils,
South Fork Boise
River,
Solider Mountains,
Idaho batholith*



Hells Canyon Dam.



Seven Devils Mountains



View west across Seven Devils to Cuddy Mountains and Wallowa Mountains



South Fork Boise River, Smoke fills Treasure Valley



South Fork Boise River view to the east. Prairie on left. Canyon-filling basalts of two generations.

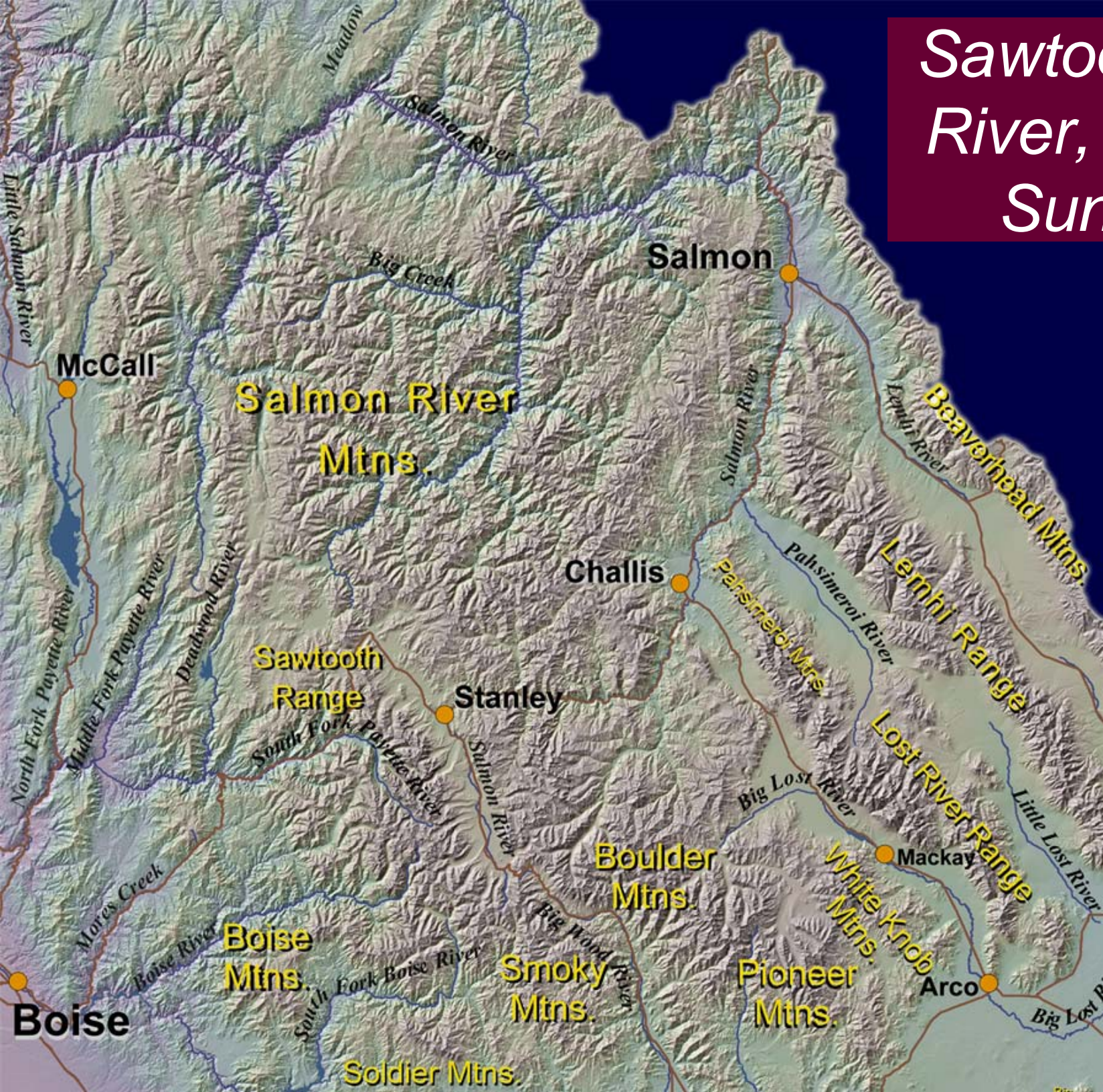


Featherville, south Fork of the Boise River



North end of the Sawtooths, South Fork Payette River headwaters.

Sawtooth, Wood River, Pioneer, Sun Valley





North end of Sawtooths, Stanley Lake Creek.



Redfish Lake, Mt Heyburn, tarns.



View south of Wood River Valley and Boulder Mountains, from near Galena Summit.



Sun Valley and Ketchum, view to west toward Bald Mountain and River Run lift base.



Wood River Valley, Boulder Mountains in foreground, Pioneer Mountains in background. View to south at junction of North Fork of Wood River and main Wood River at the SNRA Headquarters.



Pioneer Mountains core complex, view south up West fork Wildhorse Creek. Hyndman Peak in right skyline.



Idaho From The Air

Digital Geology of Idaho

NSF Geoscience
Education
Grant 03-31174



Digital Atlas of Idaho
Idaho's natural history online