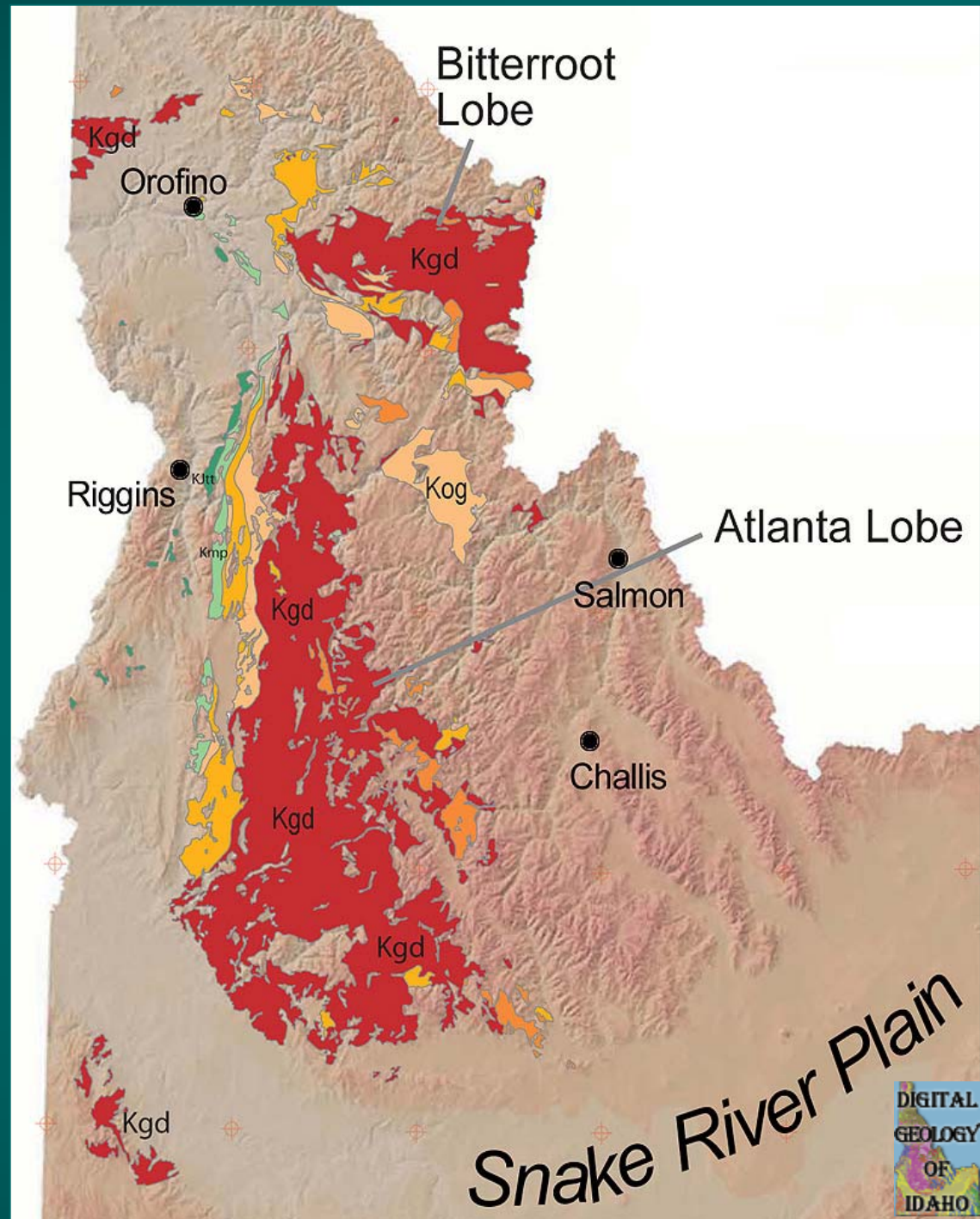


Bitterroot Lobe Idaho Batholith

Photos by Jim Cash
Moscow High School





Cirque above Canteen Meadows - looking north from FS trail 343, Idaho County



Lochsa River looking up canyon, Bitterroot Lobe, Idaho batholith, Hwy 12, mp 116.



Selway River Falls, over Bitterroot Lobe granitic rocks



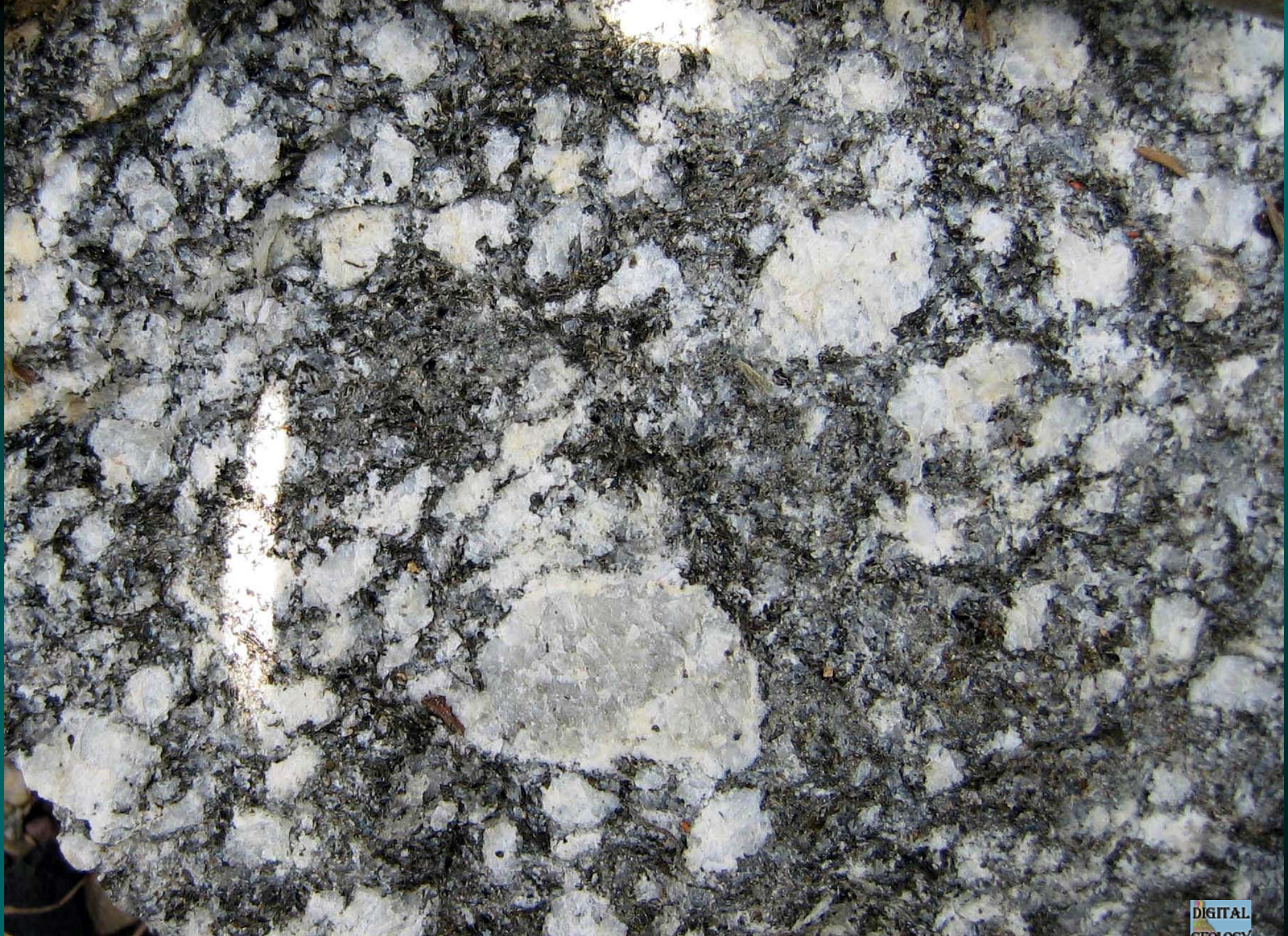
Coolwater Creek orthogneiss, Lochsa River, Highway 12, Clearwater Mountains.



Outcrop of granodiorite crosscut by mafic dike, Highway 12, mp. 142, Idaho County.



Migmatitic Bitterroot Lobe, Forest Service Road 343, Idaho County



Megacrysts of K-spar with lighter rims of plagioclase.

Close-up of gneiss w
megacrysts
(augengneiss) in
Bitterroot lobe, Idaho
batholith.

Highway 12, mp 48.9,
Idaho County

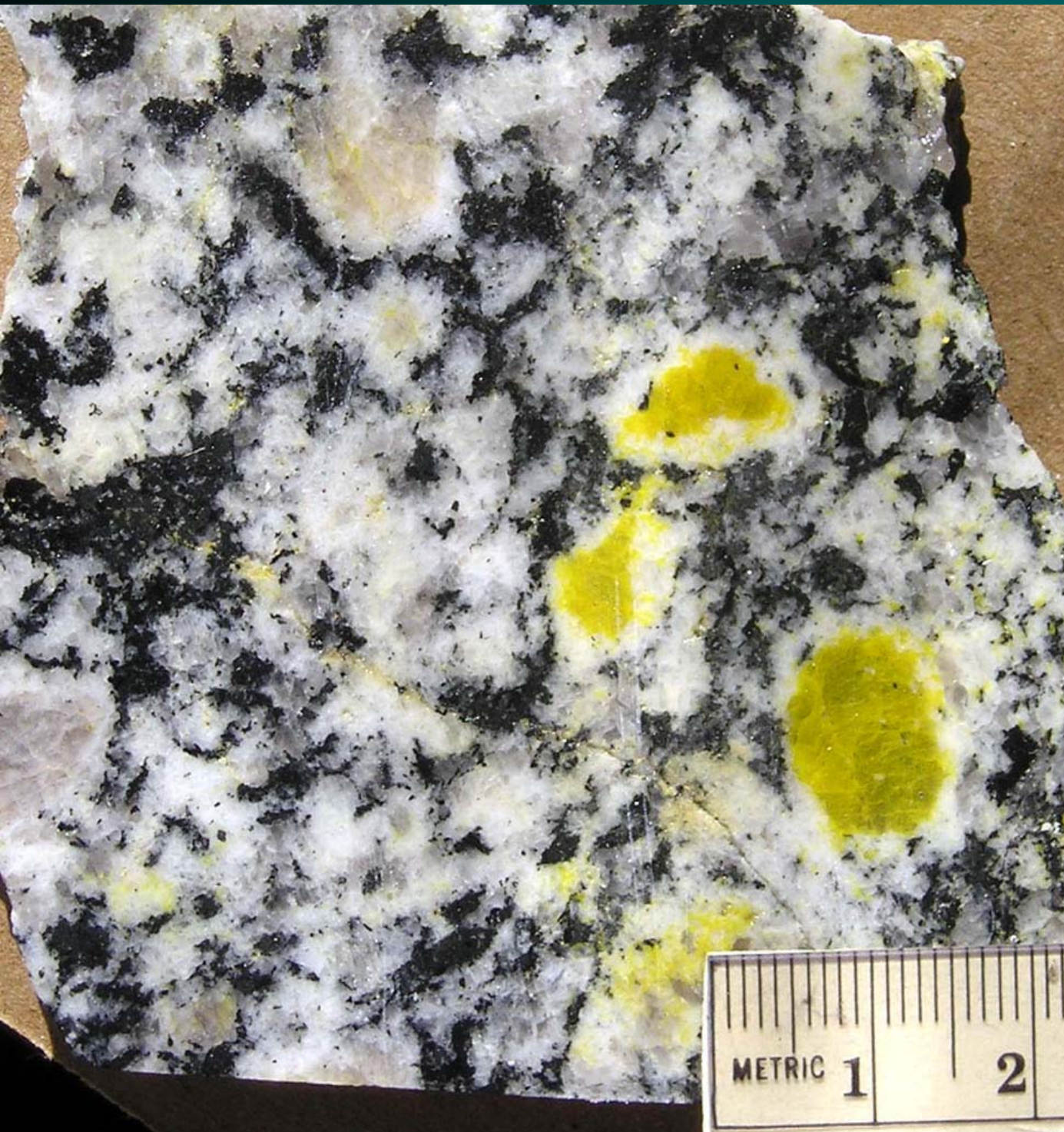




Outcrop of granodiorite just south of Big Fog Mtn, FS Trail 343, Idaho Co.



Outcrop of Wallace Formation rocks intruded by felsic and mafic dikes near contact with Bitterroot lobe, Highway 12 mp 164, Idaho County



Granodiorite with rapakivi texture (K-spar cores, plagioclase rims) from mouth of Glade Creek at the western edge of the Bitterroot lobe of the Idaho batholith. Right side of slab stained for K-spar (yellow).



Stained slab of biotite granodiorite of the Bitterroot Lobe, Idaho batholith. Potassium feldspar is stained yellow. Plagioclase is white, quartz is gray.