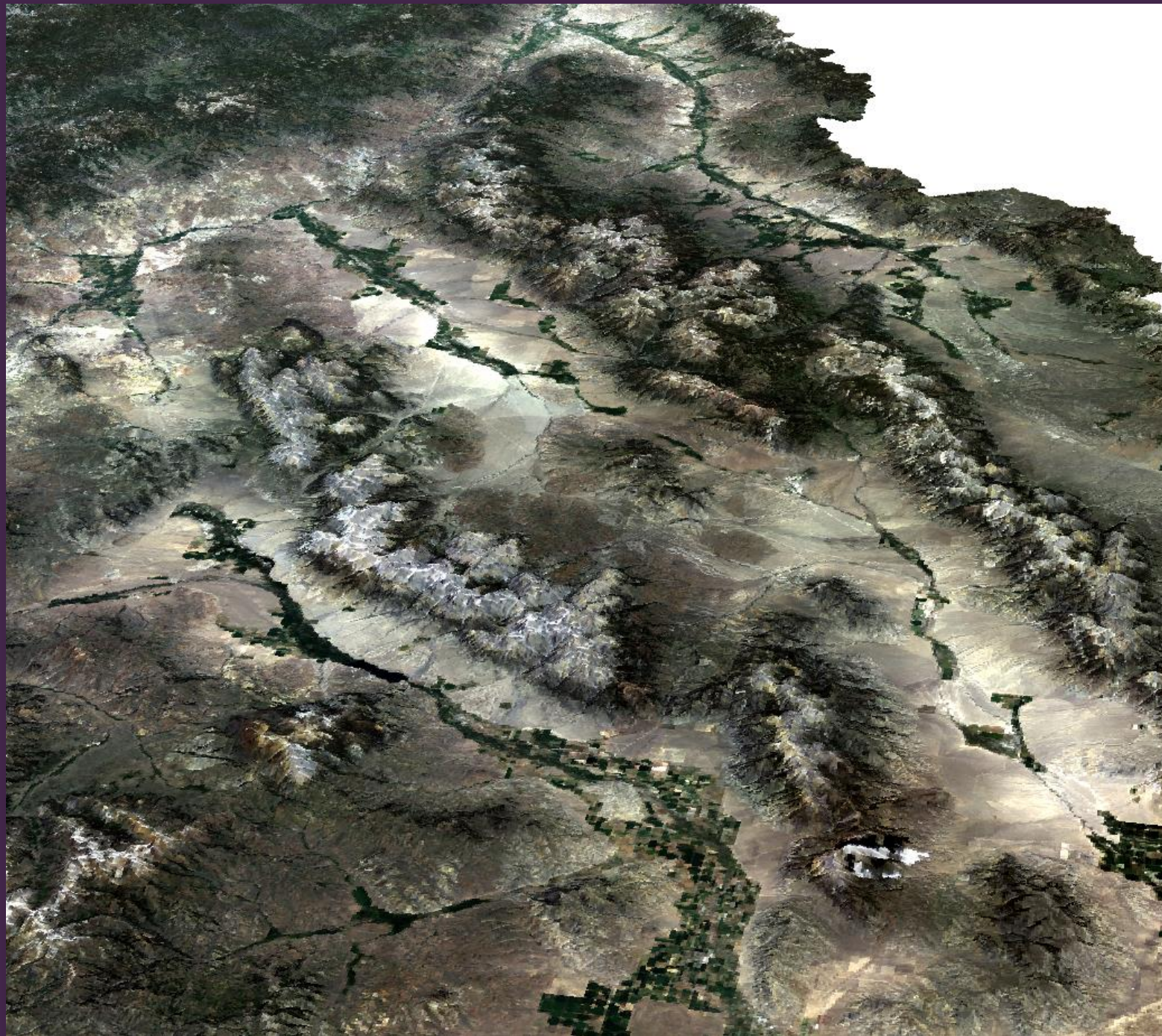


Satellite image showing Basin and Range topography north and south of Snake River Plain. From east to west north of the Snake River Plain are the Beaverhead, Lemhi, Big Lost, and Pioneer Mountains.

Grant #GEO-0331174







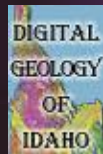
Northeast to southwest; the south end of the Beaverhead Range, the Lemhi Range, Lost River Range, and eastern part of the Pioneer Mountains near Antelope Creek. Big Lost River Valley is in central southern part of the view. Pass Creek is in the center of the view, trending north.





West side of central Lost River Range. Mt. McCaleb in center of view. Big Lost River in foreground is just below Mackay Reservoir.

Photo by: Paul K. Link. Grant #GEO-0331174







Upper Pahsimeroi River with the view to the south. East side of the central Lost River Range. Mt. Breitenbach on left. Rocks are folded Mississippian strata.

Photo by: Paul K. Link. Grant #GEO-0331174





Bell Mountain in the central Lemhi Range, view looks southeast from Pass Creek area.

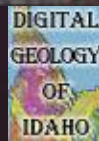
Photo by: Paul K. Link. Grant #GEO-0331174





South end of the Lemhi Range. Rocks are Paleozoic sediments. View is to northwest.

Photo by: Paul K. Link. Grant #GEO-0331174







View of Beaverhead Mountains east of Salmon, Idaho, from the southwest. The high peak is Freeman Peak. The beds in the foreground are Eocene lake sediments. A normal fault bounds the west side of the Beaverhead (Bitterroot) Range.

Photo by: Paul K. Link. Grant #GEO-0331174